
OWNER'S MANUAL

ELECTRIC CHAIN HOIST ED SERIES

EDV

250 through 1000 Lb. Capacity

Code, Lot and Serial Number

⚠ WARNING

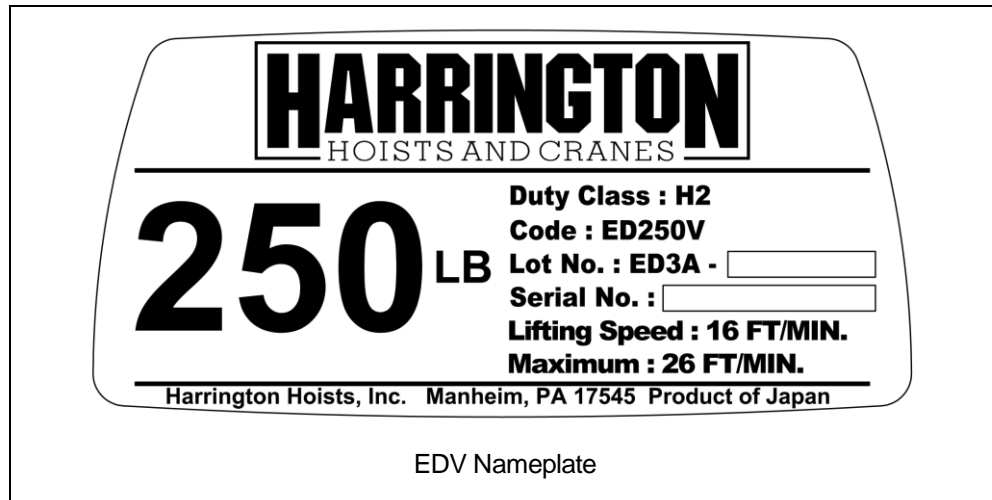
This equipment should not be installed, operated or maintained by any person who has not read and understood all the contents of this manual. Failure to read and comply with the contents of this manual can result in serious bodily injury or death, and/or property damage.

HARRINGTON
HOISTS AND CRANES

9.0 Parts List

When ordering Parts, please provide the Hoist code number, lot number and serial number located on the Hoist nameplate (see fig. below).

Reminder: Per sections 1.1 and 3.9.4 to aid in ordering Parts and Product Support, record the Hoist code number, lot number and serial number in the space provided on the cover of this manual.



The parts list is arranged into the following sections:

Section	Page
9.1 Housing, Motor, and Gearing Parts.....	42
9.2 ED1000V Additional Parts.....	46
9.3 Power Supply and Pendant Parts	48
9.4 Electric Parts	50
9.5 Mini Trolley Parts.....	52

This Page Intentionally Left Blank

9.1 Housing, Motor, and Gearing Parts

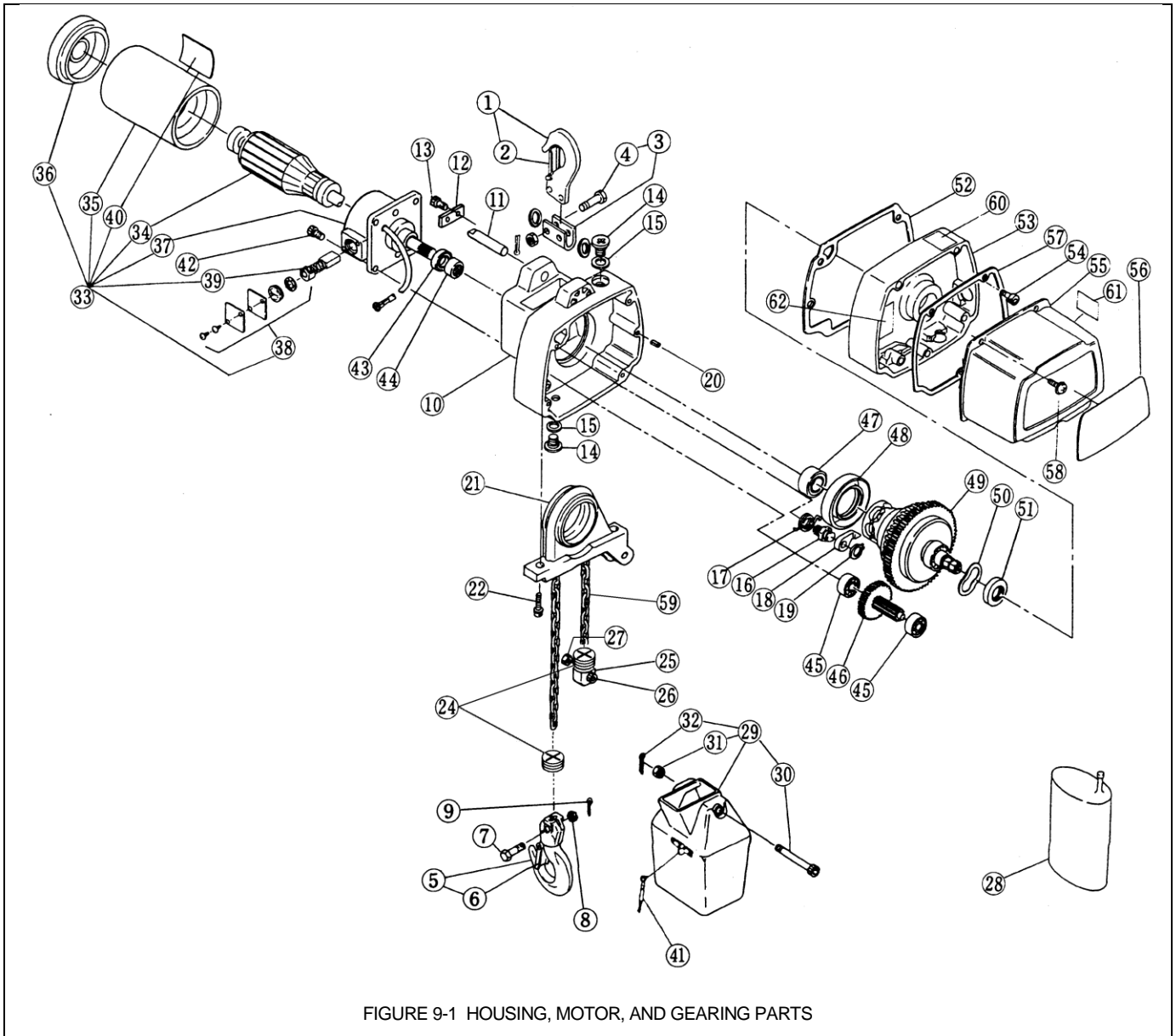


FIGURE 9-1 HOUSING, MOTOR, AND GEARING PARTS

9.1 Housing, Motor, and Gearing Parts

Fig. No.	Part Name	Parts Per Hoist	Capacity (lbs.)			
			250	350	500	1000
1	Top Hook Assembly	1	E2D1001125			
2	Hook Latch Assembly	1	L41071008			
3	Top Yoke Complete Set	1	E2D1011125			
4	Top Pin Assembly	2	M3041010			
5	Bottom Hook Comp. Set	1	E2D1021125			
6	Latch Assembly. B	1	CF071005			
7	Chain Pin	1	E2D041125			
8	Slotted Nut	1	E2D049125			
9	Split Pin	1	9009402			
10	Body	1	E3DBX10S9101	E3DBX24S9101		
11	Top Pin E	1	E2D117125	E2D117350		
12	Shaft Stopper	1		E2D118350		
13	Socket Bolt w/ Spring Washer	2		E2D072350		
14	Oil Plug	2	E3S111003			
15	Plug Packing	2	E3S112003			
16	Pawl Pin	1	E2D269125			
17	Pawl Spring	1	E2D270125			
18	Pawl	1	L4155015			
19	Snap Ring	1	L4188015			
20	Set Pin	2	CF083020			
21	Chain Guide	1	E3DBX10S9401	E3DBX24S9401		
22	Socket Bolt w/ Spring Washer	2	E2D451125			
24	Cushion Rubber	2	E3DBX10S9046			
25	Stopper	1	E1DBX10S9045			
26	Socket Bolt w/ Spring Washer	1	E2D086125			
27	Lever Nut	1	E2D087125			
28	Gear Oil	1	E2D90B125	E2D90B350		
29	Chain Container 10 ft max lift	1	E2D1831125			
	Chain Container 20 ft max lift (10 ft. for ED1000V)	1	E2D1835125			
30	Socket Bolt BP	1	E2D854125			
31	U Nut	1	E2D853125			
32	Split Pin	1	9009402			

9.1 Housing, Motor, and Gear Parts

Fig. No.	Part Name	Parts Per Hoist	Capacity (lbs.)			
			250	350	500	1000
33	Motor Complete Set for 120V, 50/60 Hz	1	E2D1501P125	E2D1501P350		
34	Armature Assembly for 120V, 50/60 Hz	1	7023001	E2D5508P350		
35	Stator Assembly	1	E2D5507P125	E2D5507P350		
36	Motor Cover	1	(Part of armature assembly)	E2D509P350		
37	Motor Flange	1	E2D506P125	E2D506P350		
38	Lid Assembly	2	E2D1510P125	E2D1510P350		
39	Carbon Brush	2	E2D502P125	E2D502P350		
40	Name Plate M	1	E2D802P250	E2D802P350		
42	Socket Bolt w/ Spring Washer	4	J1BG20602222 (M6 x 22mm)			
43	Oil Seal	1	E2D221125			
44	Needle Roller Bearing	1	E2D222125			
45	Ball Bearing	2	9000100			
46	Gear #2 Assembly	1	E2D1223250	E2D1223-525		
47	Ball Bearing	1	E2D238125	E2D238350		
48	Oil Seal	1	E2D236125	E2D236350		
49	Friction Clutch Assembly (Including Load Sheave)	1	E2D5234-400	E2D5234-525		
50	Set Spring	1	E2D311125	E2D311350		
51	Oil Seal	1	E2D239125	E2D239350		
52	Gear Cast Packing	1	E2D125125	E2D125350		
53	Gear Case	1	E2D105125	E2D105350		
54	Socket Bolt w/ Spring Washer	4	E2D152125			
55	Controller Cover	1	E2D104125	E2D104350		
56	Name Plate B	1	80580	80581	80582	80583
57	Controller Cover Packing	1	E2D109125	E2D109350		
58	Machine Screw w/ Spring Washer	3	MS554010			
59	Load Chain	Ft.	LCED125NP			
60	Warning Seal EO	1	E2D865125			
61	Warning Seal EE	1	E2D866125			
62	Warning Seal EF	1	E2D867125			

This Page Intentionally Left Blank

9.2 ED1000V ADDITIONAL PARTS

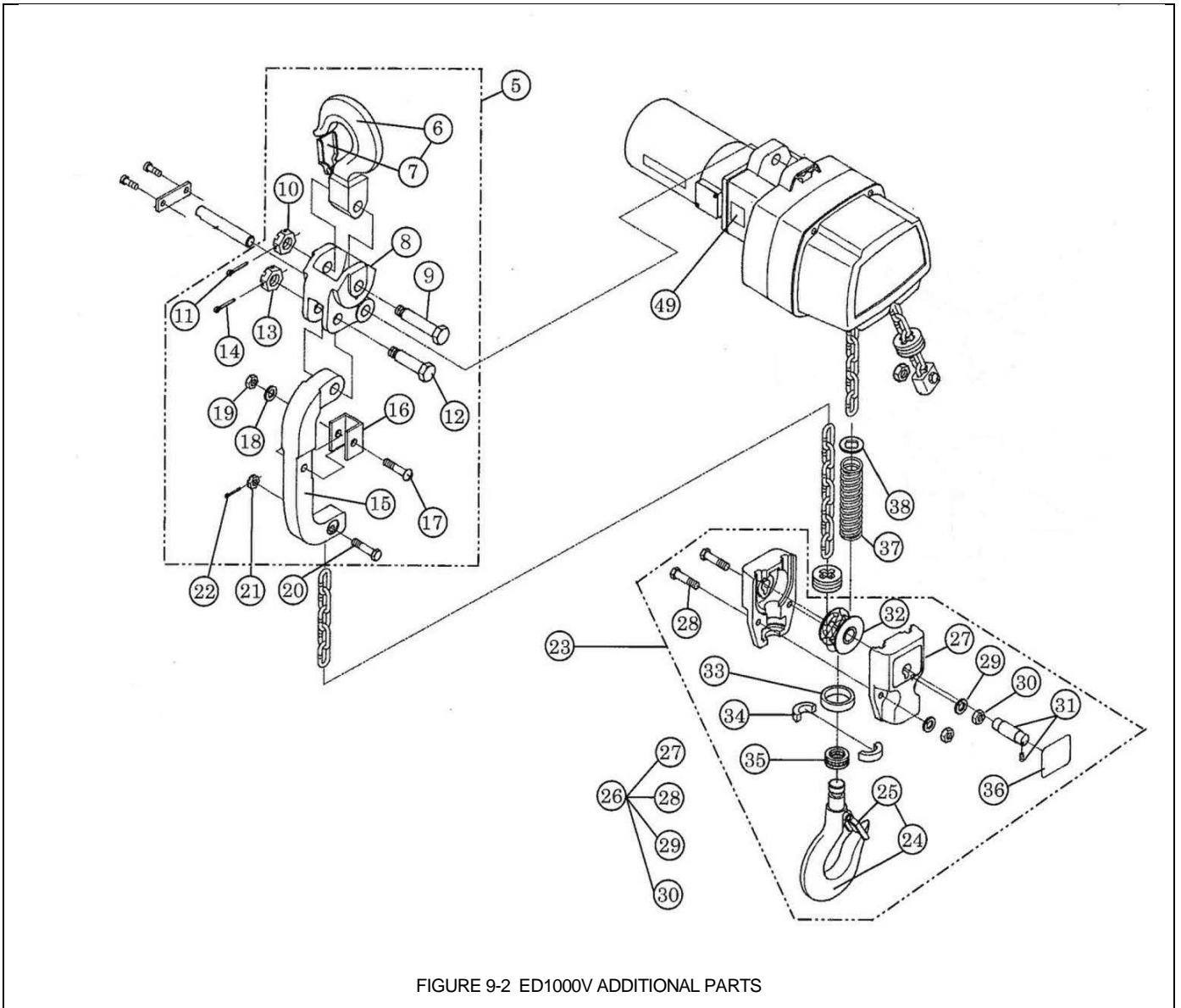


FIGURE 9-2 ED1000V ADDITIONAL PARTS

9.2 ED1000V Additional Parts

Fig. No.	Part Name	Parts Per Hoist	Capacity (lbs.)
			1000
5	Connection Yoke Complete Set	1	E3DBX48S1470
6	Top Hook assembly	1	E3DBX48S6460
7	Hook Latch assembly	1	CF071005
8	Connection Yoke	1	E3DBX48S9470
9	Top Pin, L	1	ES006005L
10	Slotted nut	1	L3183008
11	Split Pin	1	9009403
15	Joint Yoke	1	E3DBX48S9580
16	Protection Pad	1	E3DBX48S9592
17	Truss Head Machine Screw	1	J1AG25003535
18	Washer	1	9012510
19	U nut	1	9098503
20	Chain pin	1	E2D041125
21	Slotted nut	1	E2D041125
22	Split pin	1	9009402
23	Bottom Hook Complete Set	1	83056
24	Bottom Hook Assembly	1	ER2CS1011
25	Hook Latch Assembly	1	ER2CS1002
26	Bottom Yoke Assembly	1	E3DBX48S2485
27	Bottom Yoke	2	E3DBX48S9485
28	Bolt	2	9093307
29	Spring Lock Washer	2	9012709
30	Nut	2	9093420
31	Bottom Shaft Assembly	1	E3DBX48S6489
32	Idle Sheave Assembly	1	E3DBX48S6487
33	Thrust Collar A	1	ES026003
34	Hook Stopper	2	ES027003
35	Thrust Bearing	1	ES022003
36	Name Plate C	1	E3DBX48S9597
37	Chain Spring	1	E3DBX48S9590
38	Washer	1	E3DBX48S9591
49	Warning Seal E (Finger protection)	1	E3DBX48S9599
50	Nameplate M (Motor Nameplate)	1	E3DHX48S9802

9.3 Power Supply and Pendant Parts

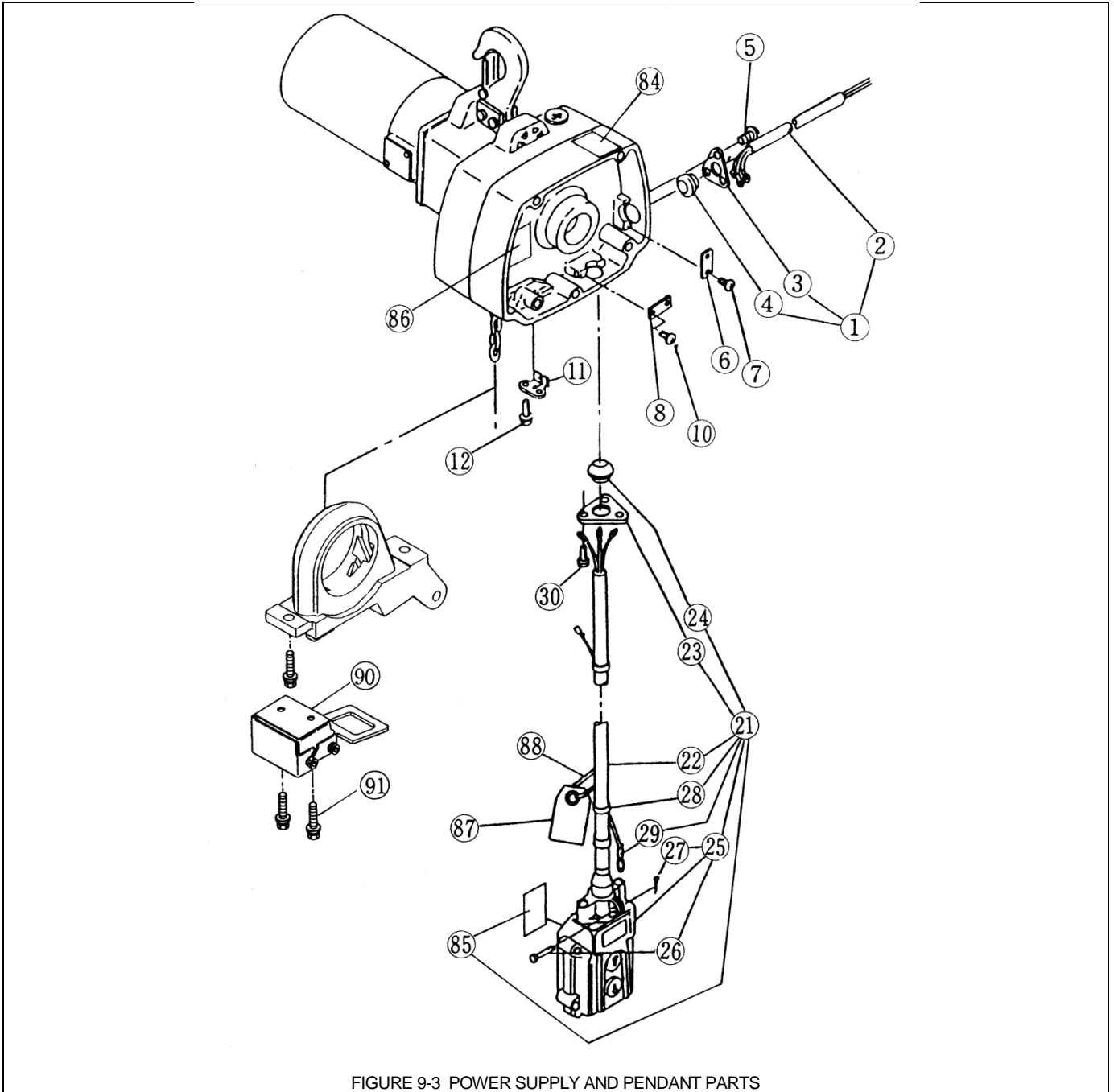
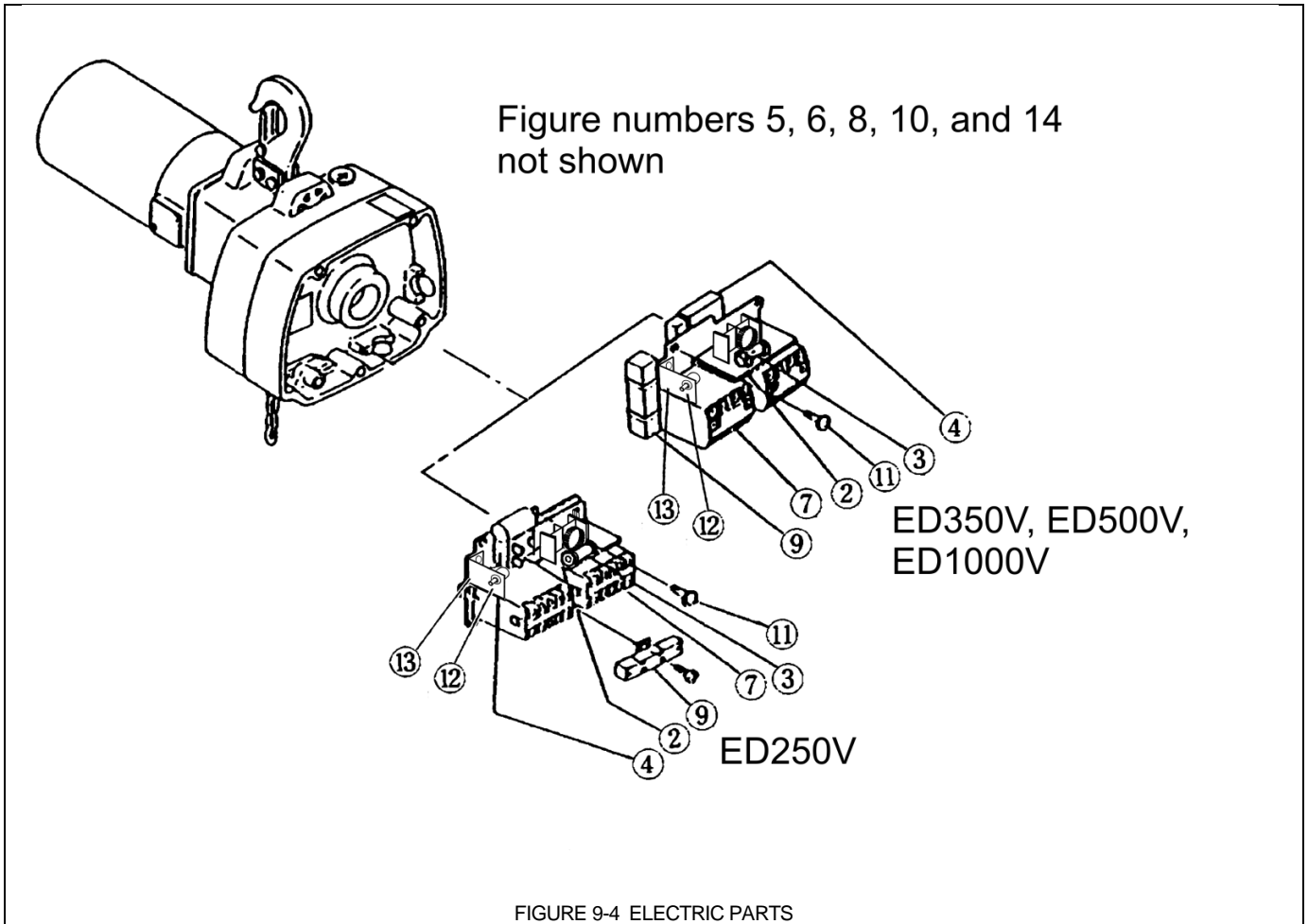


FIGURE 9-3 POWER SUPPLY AND PENDANT PARTS

9.3 Power Supply and Pendant Parts

Fig. No.	Part Name	Parts Per Hoist	Capacity (lbs.)			
			250	350	500	1000
1	Power Supply Cable 3C Complete Set	1	E2D1521125			
2	Power Supply Cable 3C	1	16/3			
3	Cable Holder C	1	E2D537125			
4	Cable Packing C8	1	E2D524125			
5	Machine Screw w/ Spring Washer	3	MS554010			
6	Cable Clamp E8	1	E2D541125			
7	Machine Screw w/ Spring Washer	2	MS556010			
8	Cable Clamp E8	1	E2D541125			
10	Machine Screw w/ Spring Washer	2	MS556010			
11	Cable Support L	1	E2D543125			
12	Machine Screw w/ Spring Washer	2	MS554010			
21	Push Button Cord 3C Complete Set	1	E2D1607P125	E2D1607P350		
22	Push Button Cord 3C	FT	16/3P			
23	Cable Holder C	1	E2D537125			
24	Cable Packing C8	1	E2D524125			
25	Push Button Switch S Assembly	1	E2D1615125			
26	Cord Chain Pin	1	ES628003			
27	Split Pin	1	9009402			
28	Lock-Belt	3	E2D640125			
29	Fixing Sleeve	1	9012301			
30	Machine Screw w/ Spring Washer	3	MS554010			
84	Warning Seal EO	1	E2D865125			
85	Warning Seal EE	1	E2D866125			
86	Warning Seal EF	1	E2D867125			
87	Warning Tag LD	1	E2D931125			
88	Chain Stopper Link	1	E2D045D125			
90	Limit switch	1	E3DBX10S1411	E3DBX24S1411		
91	Socket Bolt w/ Spring Washer	2	J1BG2-0401010			

9.4 Electric Parts



9.4 Electric Parts

Fig. No.	Part Name	Parts Per Hoist	Capacity (lbs.)			
			250	350	525	1000
2	Converter Assembly	1	E2D616PD125	E2D616PD350		
3	Fuse	1	E2D664125	E2D664350		
4	Silicone Stack Assembly	1	E2D622125	E2D622350		
5	Machine Screw w/ Spring Washer (for converter)	2	E2D667125			
6	Machine Screw w/ Spring Washer (for silicone stack)	1	MS557010			
7	Electromagnetic Contactor	2	E2D617P125			
	Electromagnetic Contactor Complete Set	1		E2D617P350		
8	Machine Screw w/ Spring Washer (for Contactor)	4	MS555010			
	Machine Screw w/ Spring Washer (for base)	4		E2D667125		
9	Resistor	1	E2D619P125	E2D619P350		
10	Machine Screw w/ Spring Washer (for Resistor)	9		MS557010		
11	Socket Bolt w/ Spring Washer	3	E2D651125			
		4		E2D651350		
12	Potentiometer	1	E3DBX10S5691			
13	Potentiometer Bracket	1	E3DBX10S9680			
14	Machine Screw for Potentiometer Bracket	2	J1AW24000808			

9.5 Mini Trolley Parts

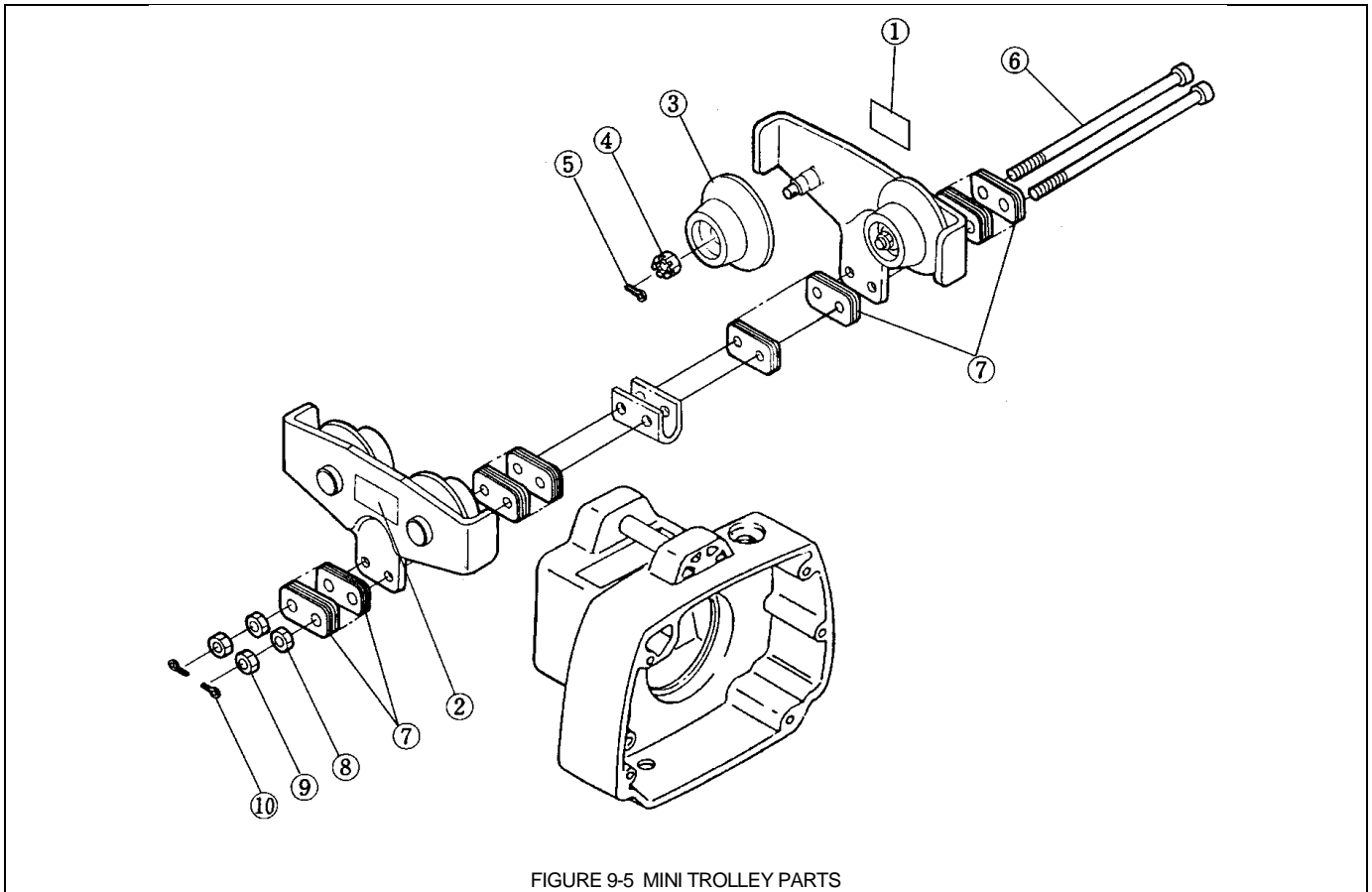


FIGURE 9-5 MINI TROLLEY PARTS

Fig. No.	Part Name	Parts Per Hoist	Capacity (lbs.)		
			250	350	500
1	Name Plate C	1	8058401	8058402	8058403
2	Name Plate B	1	ET25800525		
3	Track Wheel Assembly	4	ET255102525		
4	Slotted Nut	4	M2049010		
5	Split Pin	4	9009411		
6	Socket bolt	2	ET25115525		
7	Adjusting Spacer	32	ET25116525		
8	Nut	2	9093424		
9	U Nut	2	ET25155525		
10	Split Pin	2	9009411		

This Page Intentionally Left Blank

This Page Intentionally Left Blank

This Page Intentionally Left Blank



www.harringtonhoists.com

Harrington Hoists, Inc.
401 West End Avenue
Manheim, PA 17545-1703
Phone: 717-665-2000
Toll Free: 800-233-3010
Fax: 717-665-2861

Harrington Hoists – Western Division
2341 Pomona Rd. #103
Corona, CA 92880-6973
Phone: 951-279-7100
Toll Free: 800-317-7111
Fax: 951-279-7500

EDVOM